

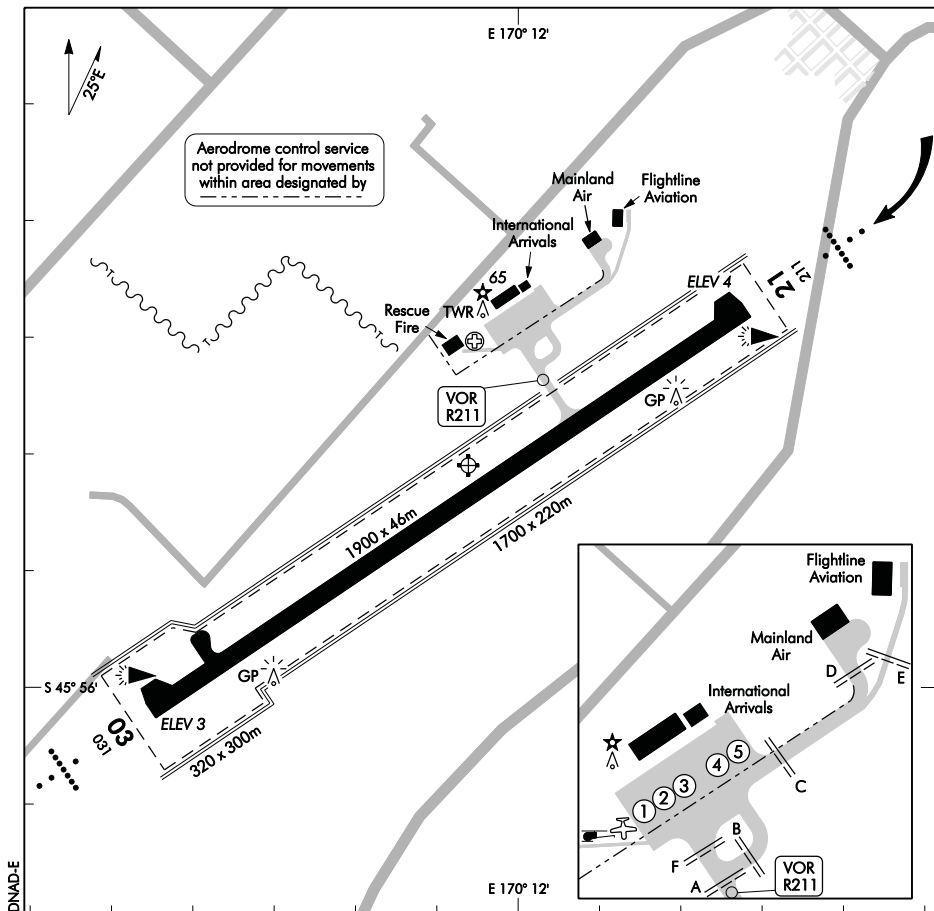
ELEV 4

NZDN

TOWER: 120.7 122.4

ATIS: 128.8

UNATTENDED: 120.7

**DUNEDIN  
AERODROME**

1. Circuit: Left hand — RWY 03  
Right hand — RWY 21

When ATC is on watch, unless otherwise instructed, circuit altitude is 1000ft AMSL.

2. All aircraft movements are to be confined to sealed areas.  
3. No night VFR circuits unless CGL operative.  
4. **CAUTION:** Bird hazard. Plovers continually present, gulls present in inclement weather. Oystercatchers occasionally present.

**D**

5. All jet aircraft Code C and above must use the turning nodes at RWY 03/21 thresholds for turning.

S 45 55 41 E 170 11 54

**Effective: 7 APR 11**

© Civil Aviation Authority

**DUNEDIN  
AERODROME**

Certificated Aerodrome 11NM W of Dunedin

**DUNEDIN**

NZDN

**OPERATIONAL DATA (1)****RWY**

RWY	SFC	Strength	Gp	Slope	ASDA	Take-off distance			LDG DIST
						1:40	1:50	1:62.5	
03 21	B	PCN 60/F/D/W/T	8	Nil	1900	1960 1960	1960 1960	1960 <sup>1</sup> 1960 <sup>2</sup>	1900 1900

Note:

<sup>1</sup> RWY 03 TODA @ 1:62.5 applies to curved flight path. Turn commences @ 10462m from origin and follows true bearing 108° on a 2450m radius or 1050 radius of turn. Due to obstacle outside Obstacle Limitation Surface.

<sup>2</sup> RWY 21 TODA @ 1:62.5 applies to curved flight path. Turn commences @ Henley NDB and follows true bearing 226°. Due to critical obstacle.

RESA: RWY 03 RESA (RWY 21 THR) 90 x 92m  
RWY 21 RESA (RWY 03 THR) 240 x 92m

**Critical Obstacles**

RWY	Obstacle	Distance from SOT (m)	Height (ft) AMSL
21	Pylon	15658	748

**MINIMA**

IFR Take-off		
RWY	Day	Night
03 <sup>1</sup>	1300-3000	1300-5
21 <sup>1</sup>	700-3000	1000-5
03 <sup>2</sup>	700-3000	1000-5
21 <sup>3</sup>	1300-3000	1300-5

<sup>1</sup> Reduced take-off minima available during TWR HR — not below 0-400. OPS below 800 metres visibility subject to availability of serviceable secondary power supply and automatic switch-over.

<sup>2</sup> Visual circuit after take-off and departure via HL NDB.

<sup>3</sup> Visual circuit after take-off and departure via MI NDB.

**LIGHTING**

Runway: 03/21 LIL ALS/2 bar; PAPI 3.0°/TCH 58; LIH RWY

Aerodrome: ABN FLG W 3.75 SEC WDI

Taxiway: CL RWY 03 & 21 turning nodes: edge

Apron: Edge, floodlighting

Circling guidance lighting: F A

Road traffic barriers, approach RWY 21 FLG R.

For remote control of aerodrome lighting contact Dunedin International Airport Ltd

Tel (03) 486 2879 (24 HR) or (03) 358 1694.

Standby power available.

**Effective: 7 APR 11**