

ELEV 4

CAT A,B,C,D

DUNEDIN

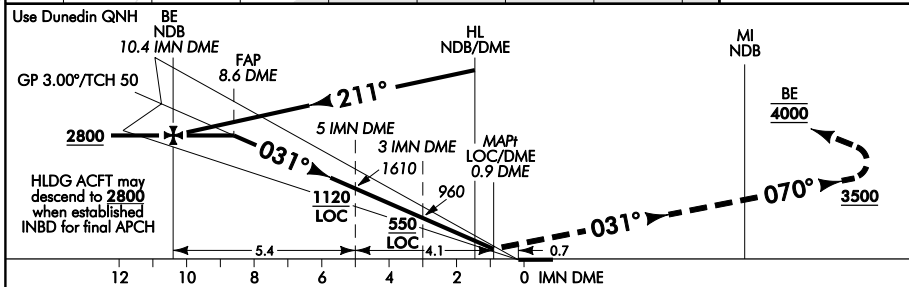
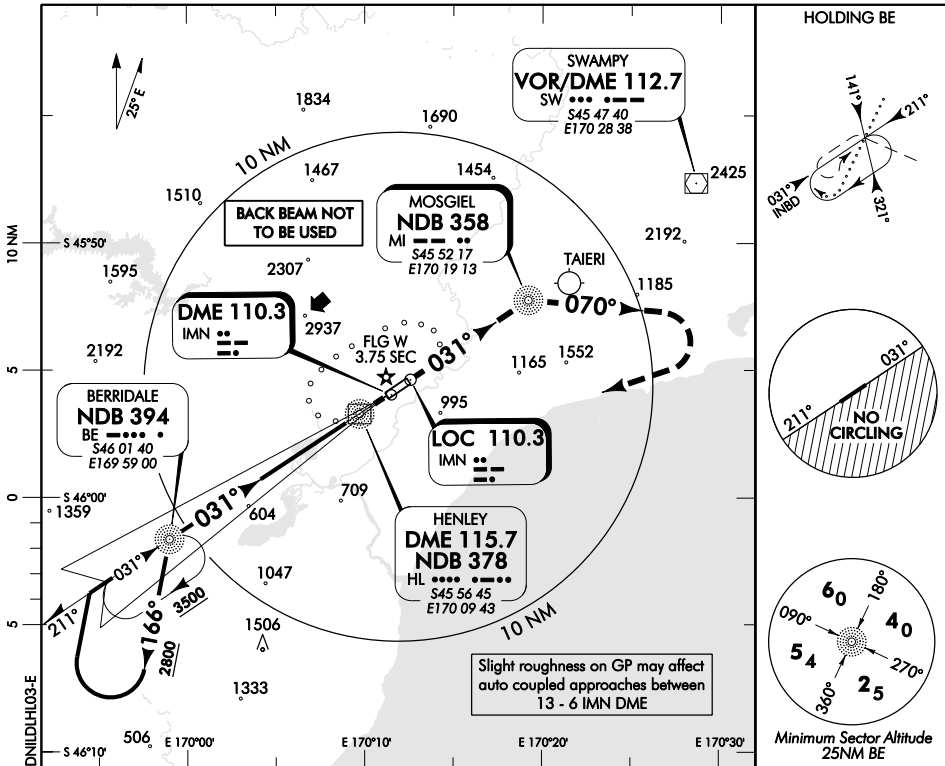
RWY 03 THR ELEV 3

ILS/DME or LOC/DME RWY 03

TOWER: 120.7 122.4

ATIS: 128.8

UNATTENDED: 120.7



MISSED APCH: Track 031° to MI NDB, turn RIGHT track 070° from MI NDB to 3500, turn RIGHT direct to BE NDB 4000

IMN DME DIST	10	9	8	7	6	5	4	3	2	1	0.9
Advisory Altitude 3°	3270	2940	2600	2270	1940	1610	1290	960	640	MDA	DA
Category	A			B			C			D	
ILS/DME	303(300) - 1200										
LOC/DME	320(316) - 2000										
Circling*	430(426) - 2000			730(726) - 2800			1220(1216) - 5			NA	

*Circling NA south east of RWY 03/21. CAT B and C aircraft must follow the CGL path. MAX IAS 160kt.

Changes from 3 JUN 10: LOC only minima removed, circling instructions, editorial.

Effective: 23 SEP 10

ELEV 4

CAT A,B,C,D

DUNEDIN

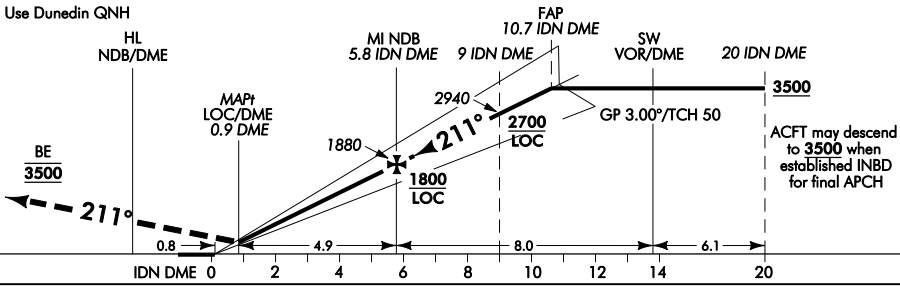
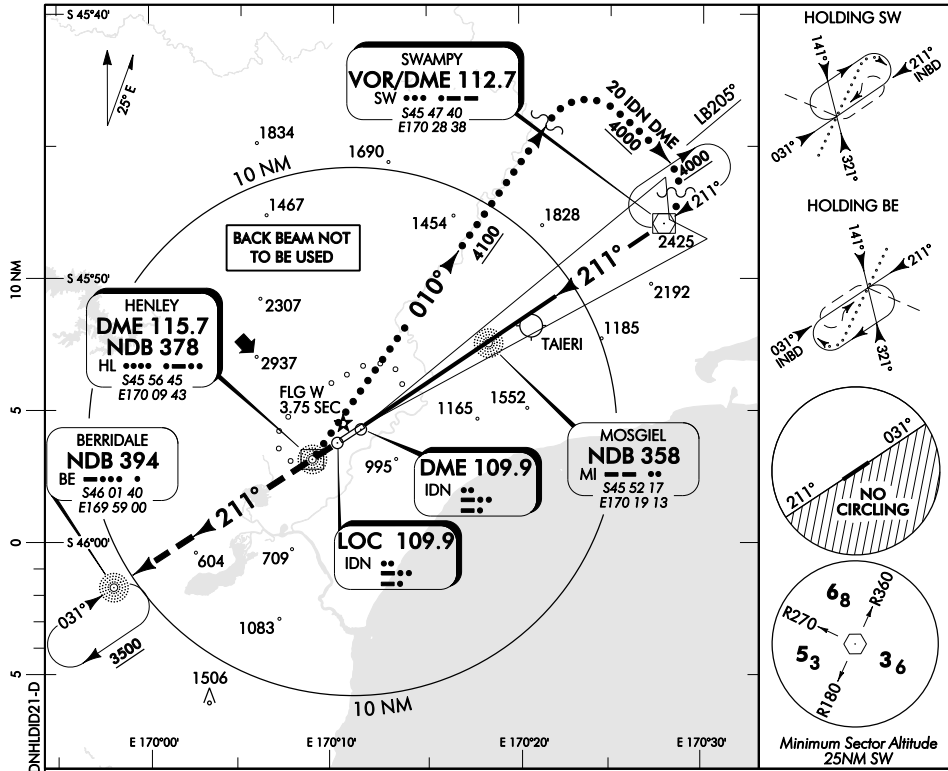
RWY 21 THR ELEV 4

ILS/DME or LOC/DME RWY 21

TOWER: 120.7 122.4

ATIS: 128.8

UNATTENDED: 120.7



MISSED APCH: Track 211° to BE NDB 3500

IDN DME DIST	0.9	1	1.3	2	3	4	5	6	7	8	9	10
Advisory Altitude 3°	DA	320	MDA	640	960	1290	1620	1940	2270	2610	2940	3270
Category	A			B			C			D		
ILS/DME	304(300) - 1200											
LOC/DME	410(406) - 2000											
Circling*	430(426) - 2000			730(726) - 2800			1220(1216) - 5			NA		

* Circling NA south east of RWY 03/21. CAT B and C aircraft must follow the CGL path. MAX IAS 160kt.

Changes from 3 JUN 10: Circling instructions, editorial.

Effective: 23 SEP 10